



# 85 Series Standard & 185 Series Bracket System

**HEAVY-DUTY**

- Up to 680 lbs./pair\*
- Double slot design
- Adjustable in 1" increments



## Applications

Designed for extra-heavy adjustable storage needs or long extended runs of shelving in commercial and industrial applications. Ideal for residential uses such as supporting workbenches or countertops in utility rooms. Also, ideal for shelving in retail stores and industrial warehouses. Great for areas receiving frequent use and rough handling.

**Load Rating:** Varies per size\*

**Mounting:** Wall

**Material:** 14- and 16-gauge steel construction

## Finishes:

**RoHS Compliant:** Anochrome (ANO) , White (WH): Attractive, long-lasting, corrosion resistant finishes

## Features:

A broad range of sizes accommodates virtually any configuration and can be quickly adjusted to changing storage needs. The double lug pattern and double slot design is built to withstand high weight load demands. Accessories for the 85 Series Standard & 185 Series Bracket System allow use with hang rods, attachment of decorative panels for store fixturing needs, or to create long extended runs of shelving. 180 Series Brackets and all other KV 1" adjustable brackets can also be used with 85 Series Standards.

### 85 Series Standards

- Dimensions: 1-1/4" wide x 1/2" deep x selected length
- 16-gauge steel construction
- Made in the USA
- Available from open stock

### 185 Series Brackets

- 16-gauge steel construction: 8" - 12" brackets
- 14-gauge steel construction: 14" - 24" brackets
- Vertically adjustable in 1" increments
- Made in the USA
- Available from open stock

\* Contact KV Customer Service for more information.



85 Series Standards



Anochrome  
(ANO)



White  
(WH)



Standard Pack (10/pack. 40 lbs./100 ft.)		
Size	Anochrome (ANO)	White (WH)
24"	85 ANO 24	85 WH 24
36"	85 ANO 36	85 WH 36
48"	85 ANO 48	85 WH 48
60"	85 ANO 60	85 WH 60
72"	85 ANO 72	85 WH 72
84"	85 ANO 84	85 WH 84
96"	85 ANO 96	85 WH 96

## 185 Series Brackets

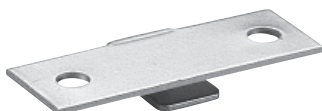


### Standard Pack

(10/box. 12" Package weighs approx. 9.5 lbs.)

Size	Anochrome (ANO)	White (WH)
8"	185 ANO 8	185 WH 8
10"	185 ANO 10	185 WH 10
12"	185 ANO 12	185 WH 12
14"	185 ANO 14	185 WH 14
16"	185 ANO 16	185 WH 16
18"	185 ANO 18	185 WH 18
20"	185 ANO 20	185 WH 20
22"	185 ANO 22	185 WH 22
24"	185 ANO 24	185 WH 24

## Screws & Accessories



106 ANO



107 ANO



### Recommended Screws (For mounting standards.)

#10 flat-head wood screws

### Shelf Rest (Used for joining two shelves at one bracket.)

Standard Pack (100/box)

Anochrome (ANO)
106 ANO

### Hang Rod Clamp (Bolts to 183 and 185 Brackets to hold garment rods securely in position.)

Standard Pack (20/box)

Anochrome (ANO)
107 ANO



# 85 Series Standard & 185 Series Bracket System



**85 Series  
Double-Slot  
Wall Standard**



**185 Series  
Double-Flange  
Adjustable Bracket**

## 1. PRODUCT NAME

85 Series Double-Slot Wall Standard. 185 Series Double-Flange Adjustable Bracket. For long-run, heavy-duty shelving in light industrial, commercial, and retail applications.

## 2. MANUFACTURER

Knap & Vogt Manufacturing Company  
2700 Oak Industrial Dr. NE  
Grand Rapids, MI USA 49505-6026  
(616) 459-3311 | [www.kv.com](http://www.kv.com)

## 3. PRODUCT DESCRIPTION

**Basic Use:** 85 Series Double-Slot Wall Standards and 185 Series Double-Flange Adjustable Brackets are manufactured for storage and display applications in retail stores, light warehouses, light industrial, repair garages, maintenance storage, business office storage, residential storage, and other heavy-load situations. Standards are double slotted to accommodate double-width/double-flange brackets.

85 Series Double-Slot Wall Standards and 185 Series Double-Flange Adjustable Brackets are effective for long shelf runs. Where two shelves meet, each can have its own bracket flange for support. 85 Series Double-Slot Wall Standards mount to most wall types, and accommodate 180 Brackets and all other KV 1" adjustable brackets.

**Accessories:** 106 ANO (Anochrome) Shelf Rests are recommended for use with 185 Series Double-Flange Adjustable Brackets for anchoring the shelf to the bracket. 107 ANO (Anochrome) Hang Rod Clamp bolts to 185 Series Double-Flange Adjustable Brackets to hold garment rod.

**Composition and Materials:** 85 Series Double-Slot Wall Standards: 16-gauge steel. 185 Series Double-Flange Adjustable Brackets: 16-gauge steel (8", 10", and 12" brackets); 14-gauge steel (14"-24" brackets).

### Sizes:

**85 Standards:** 1-1/4" wide x 1/2" deep x selected length.

**Stock lengths:** 24", 36", 48", 60", 72", 84", 96"

**185 Brackets:** 0.66" wide x 4.44" high; used for shelf depths of 8", 10", 12", 14", 16", 18", 20", 22", and 24".

**Finishes:** RoHS Compliant: Anochrome (electro zinc-plated and lacquered cold rolled steel) and White (powder-coated paint).

## 4. TECHNICAL DATA

**Applicable Standards:** Standards and brackets are tested to meet or exceed ANSI performance standards as established by BHMA in the Knap & Vogt™ (KV) recommended application.

These load limits are intended to be used as general guidelines only, and no warranty — expressed or implied — is made by Knap & Vogt™.

Results were obtained by laboratory testing in accordance with ANSI/ BHMA A156.9-2003 performance standard. (Load ratings based on standards being mounted on 16" centers. Wider spacing will result in reduced load capacity.) Actual use conditions will typically result in lower load capacity than laboratory conditions.

Representative testing in a fully configured application is the only way to assure proper performance, durability, and safety.

The aforementioned shelf support load limit is intended as a guide only and not as a warranty. Actual load bearing capabilities depend upon the type of cabinet/wall material and use of appropriate shelf standard mounting fasteners, installation technique, shelf standard spacing, shelf size and construction.

### Environmental Considerations:

**Environment:** Excessive humidity, salts, or other chemical agents can corrode the finish and attack metal or plastic components.

**Fastening:** Inadequate or incorrect fasteners can result in the standard pulling loose and causing damage.

**Alignment:** Improper standard/bracket alignment can result in a shelving system that is ineffective and unsafe.

## 5. INSTALLATION

For maximum loading capacity, standards should be mounted directly to wall studs, which are generally found at 16" intervals. (If standards will not be mounted to studs, use appropriate wall anchors.)

Use the recommended fasteners (#10 flat head wood screws) in all holes to properly secure the standard. Prior to drilling all holes, check to be sure that the standard is vertically level.

Place the bracket into the standard slots. Using a hammer handle or screwdriver handle, tap lightly near the bracket's base. The bracket will wedge into place.

## 6. AVAILABILITY AND COST

**Availability:** Knap & Vogt™ (KV) products are available from stocking distributors and through KV Representatives worldwide.

**Cost:** Current pricing is available from area KV Representatives. Please call for the nearest representative: (800) 253-1561.

## 7. WARRANTY

**Limited Lifetime Warranty:** Knap & Vogt offers its standard Limited Lifetime Warranty to the initial purchaser of commercial products. This warranty covers defects in materials and workmanship which occur during normal use, and the remedy is limited to repair or replacement of defective products, at KV's option. Certain types of defects and damage are excluded from warranty coverage, costs and expenses are not covered, and additional restrictions apply. A copy of the Limited Lifetime Warranty, with all warranty details, limitations and disclaimers, is available on the Customer Care Connection location at [www.kv.com](http://www.kv.com) or from KV Customer Service, 2700 Oak Industrial Drive, Grand Rapids, MI 49505, (800) 253-1561.

## 8. MAINTENANCE

85 Series Wall Standards and 185 Series Double-Slot Adjustable Brackets require no maintenance. Inspect for proper fit periodically and adjust when necessary. Replace as required or recommended by application.

## 9. TECHNICAL SERVICES

Knap & Vogt™ and area representatives can assist with any application. For further information, or for the name of the representative nearest you, please call Knap & Vogt™ Customer Service: (800) 253-1561 or visit our website at: [www.kv.com](http://www.kv.com).

## 10. FILING SYSTEMS

Additional product information, data sheets, application sheets, and a full catalog are available upon request from Knap & Vogt™.

**BHMA** *Knap & Vogt shelving products follow the  
ANSI testing standards established by BHMA.*

*Knap & Vogt reserves the right to change product specifications at any time without notice and without incurring responsibility for existing units.  
This information conforms to editorial style prescribed by The Construction Specifications Institute.*